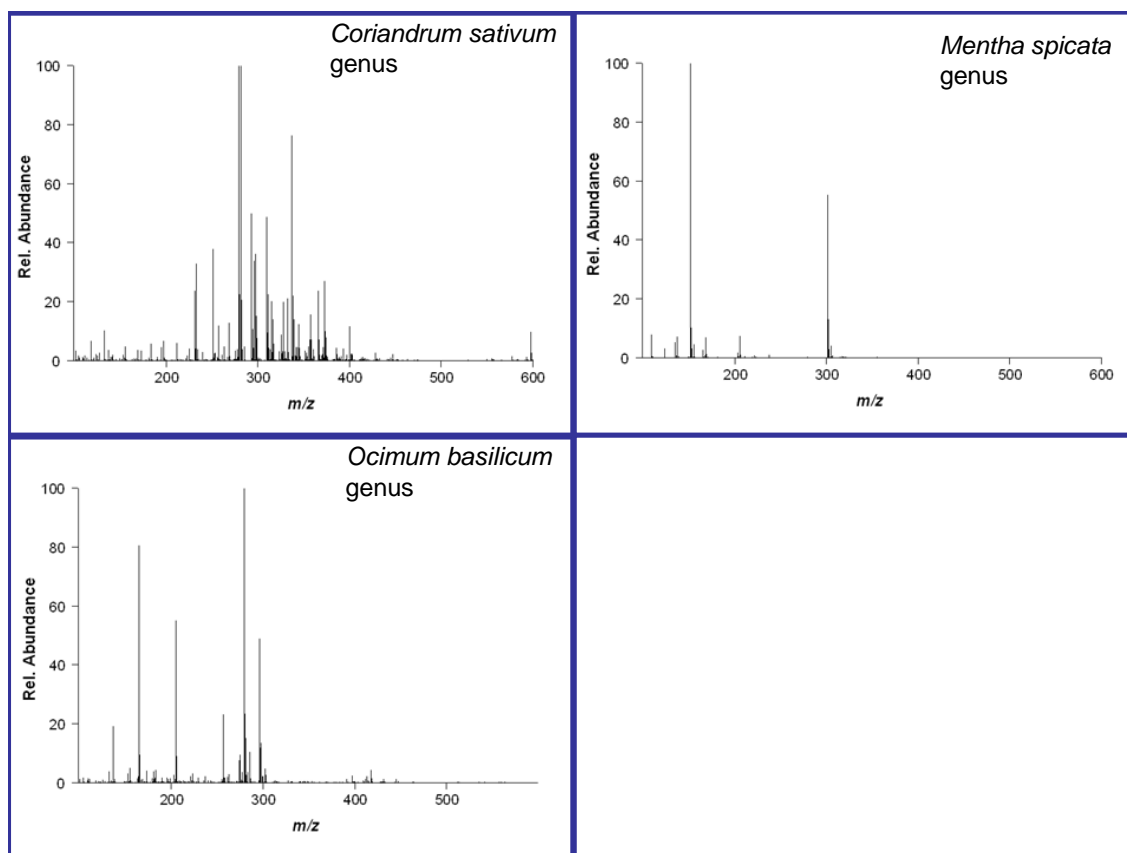


Supplementary Figure S1. The DART-MS analysis of the three botanical matrices, *Ocimum basilicum*, *Mentha spicata*, and *Coriandrum sativum*, as background spectra before they were spiked with the synthetic cannabinoids. The conditions included desorption temperature settings of 150°C for all three spectra.



Supplementary Figure S2. The DART-MS analysis of the three botanical matrices, *Ocimum basilicum*, *Mentha spicata*, and *Coriandrum sativum*, as background spectra before they were spiked with the synthetic cannabinoids. The conditions included desorption temperature settings of 200°C for all three spectra.